



Lincoln Park Academy is a public charter school celebrating ten years of service to the Clark-Fulton community and surrounding neighborhoods.

The school emphasizes social-emotional development and hands-on learning. In addition to an accredited college-prep academic program, students benefit from Character Education, PE, and Visual and Performing Arts. Students can participate in several afterschool clubs emphasizing STEM skills including Robotics.

Middle school students can take advantage of competitive sports including Basketball, Volleyball, Cheer, and Track. Additionally, families benefit from student support services such as tutoring, counseling, and summer programs.

### MISSION STATEMENT

To build the academic skills, character traits, and habits needed to excel in college prep high schools.



### GRADES SERVED

**Early K - 8**

### PRINCIPAL

**Alissa Clugh**

### REGIONAL VICE PRESIDENT

**Tamika Cleveland**

### SCHOOL YEAR OPENED

**2013-14**

### MANAGED BY ACCEL SINCE

**2015-16**

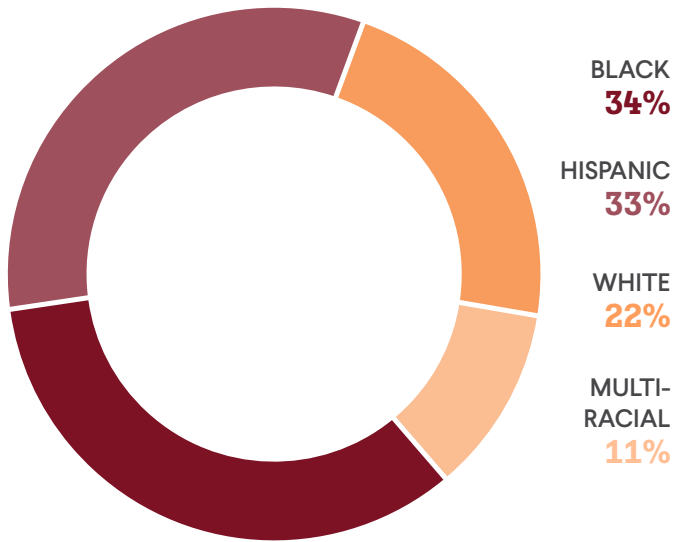
### AUTHORIZER

**Buckeye Community  
Hope Foundation**



**2022-23**  
**ANNUAL REPORT**

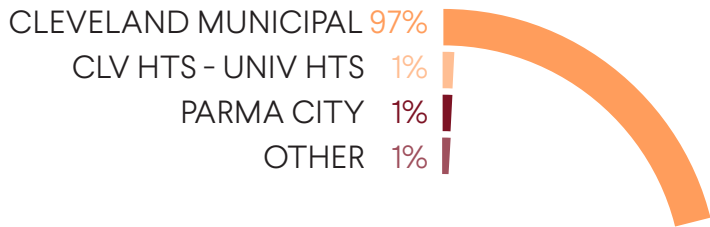
STUDENT DEMOGRAPHICS



**216**  
AVERAGE DAILY  
ENROLLMENT

**89%**  
AVERAGE DAILY  
ATTENDANCE

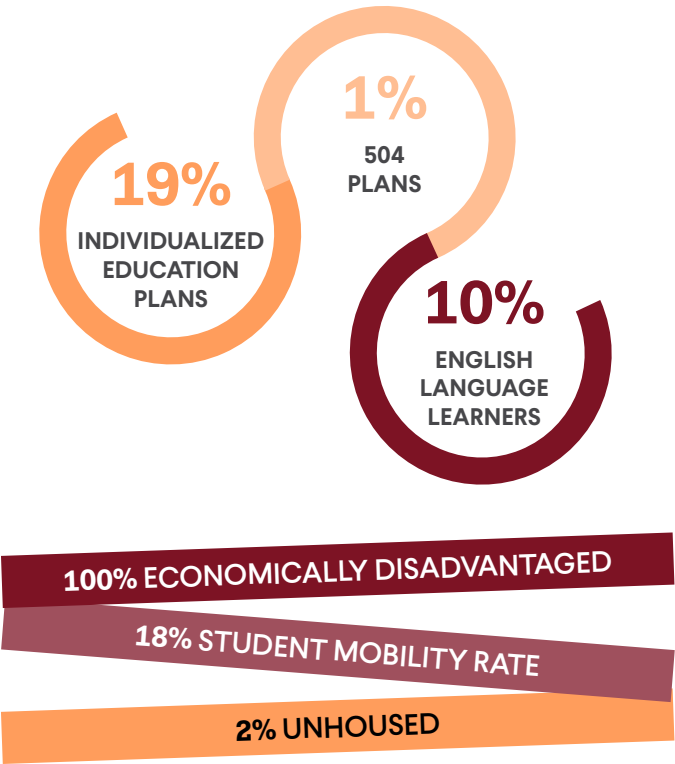
DISTRICTS OF RESIDENCE



INSTRUCTIONAL & SUPPORT STAFF



SPECIAL POPULATIONS



**HIGHLIGHTS**

- Rated 3 Stars on Progress for meeting state expectations for student academic growth
- Rated 3 Stars on Gap Closing for meeting state expectations for closing educational gaps
- Achieved year-over-year performance increase
- 100% of students met the state requirements for promotion to Grade 4
- Provided 1158 instructional hours, 26% more than the Ohio requirement for charter schools
- Campus improvements included a gated “blue top” play area for outdoor recess
- Updated signage for better visibility in the community
- Partnered with Community Hope Exchange to serve as a distribution site for monthly food giveaways
- Increased participation in middle school sports & added a Cheer program
- Added Art Club to afterschool offerings with an art exhibition event to showcase student talents
- Hosted a successful summer school with themed weeks featuring STEM and project-based learning; nearly 80 students participated



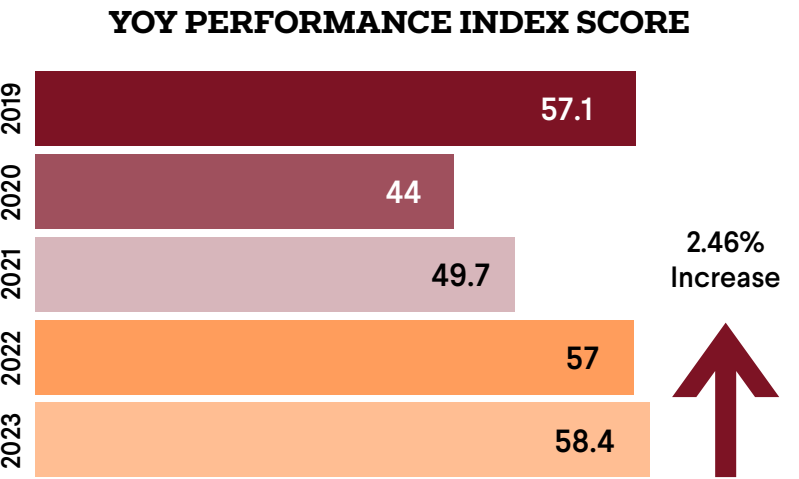
STATE REPORT CARD

PERFORMANCE INDEX SCORE <b>58.4</b>	OVERALL RATING ★★★☆☆
ACHIEVEMENT COMPONENT ★★	PROGRESS COMPONENT ★★★★★
GAP CLOSING COMPONENT ★★★★★	EARLY LITERACY COMPONENT ★



ACADEMIC PROGRESS

Lincoln Park Academy continues its to as measured by matching its pre-pandemic Performance Index (PI) score. In 2021-22, the school increased its PI by over 12%. Additionally, Lincoln Park Academy met state expectations for student academic growth (3 Stars, Progress). Additionally, 100% of students met the state criteria for promotion to Grade 4.



PROGRESS COMPONENT RATINGS BY SUBJECT & GRADE LEVEL

	ELA	Math	Science
4th Grade	Value Added data is not available	Students met state expectations in academic growth	Value Added data is not available
5th Grade	Students met state expectations in academic growth	Students made less academic growth than state expected	Students made less academic growth than state expected
6th Grade	Students met state expectations in academic growth	Students met state expectations in academic growth	Value Added data is not available
7th Grade	Students met state expectations in academic growth	Students significantly exceeded state expectations in academic growth	Value Added data is not available
8th Grade	Students met state expectations in academic growth	Students met state expectations in academic growth	Students met state expectations in academic growth

Students significantly exceeded state expectations in academic growth

Students met state expectations in academic growth

Students made less academic growth than state expected

Value Added data is not available



**LINCOLN PARK  
ACADEMY**

**SCHOOL BOARD PRESIDENT  
CYNTHIA WESTON**

**TREASURER  
JAMES VICKERS**

**SECRETARY  
DARYL HANSON**

**BOARD DIRECTORS  
TWANNIA ALLEN  
MICHELLE MITCHELL**



## **AUTHORIZED BY**

Buckeye Community Hope Foundation (BCHF) relies on multiple sources of data to evaluate the community school's performance including academic performance on national normed tests and academic scores published by the Department of Education & Workforce on the Local Report Card. In addition, BCHF conducts multiple onsite visits to the school throughout the year to ensure compliance with all Rule and Law, as well as, the sponsorship contract. Performance results for the school will be available for the 2022-2023 school year on the BCHF website [www.bchf.org](http://www.bchf.org) after November 30.



## **FINANCIAL DATA**

State Sources	3,579,097
Federal Sources	2,242,290
Local Sources	0
<b>TOTAL REVENUES</b>	<b>\$5,821,387</b>

Purchased Services	5,818,887
<b>TOTAL EXPENSES</b>	<b>\$5,818,887</b>

*At time of publication, 2023 fiscal year data was not available from the Ohio Auditor of State. For updated information visit:*  
[www.auditor.state.oh.us](http://www.auditor.state.oh.us)